



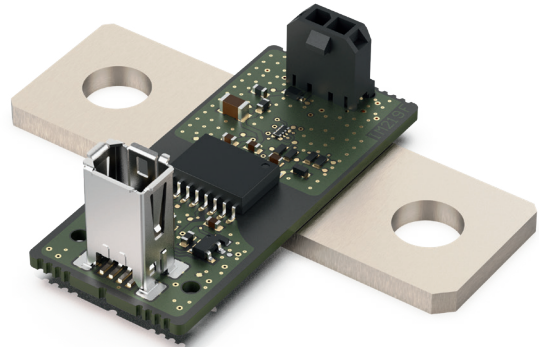
IPC-CII

COMPACT CURRENT SENSING

ISAScale® phase current sensor for standard industrial inverter

INTRODUCTION

The IPC series is a high bandwidth precision current measurement system, which provides a fully calibrated current sensing signal. Different types are available with three nominal current measurement ranges: 220 A, 380 A and 600 A. The sensors are shunt based and provide an extended measurement range up to 1,780 A. The IPC supports AC and DC applications.



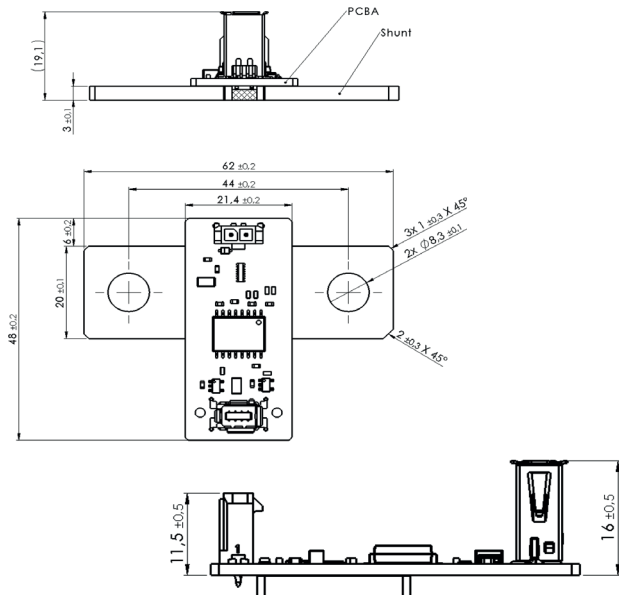
APPLICATIONS

- Frequency inverter machine tools & wind turbines
- Central inverter PV open space plants
- Frequency inverter for electrical machines and drives
- UPS system

FEATURES

- Galvanic isolated (1,500 V)
- High long-term stability
- Compact hardware design
- Communication signal LVDS
- 1 Bit datastream output

DIMENSIONS [mm]



TECHNICAL DATA

Description	Value			Unit
Measurement range	±220	±380	±600	A
Resolution	22	38	60	mA
Initial accuracy	±0.2			% of reading
Total accuracy	±1.0			% of reading
Bandwidth analog input filter 3dB	≤150			kHz
Offset	≤180	≤300	≤480	mA
Noise	≤3			digits (RMS)